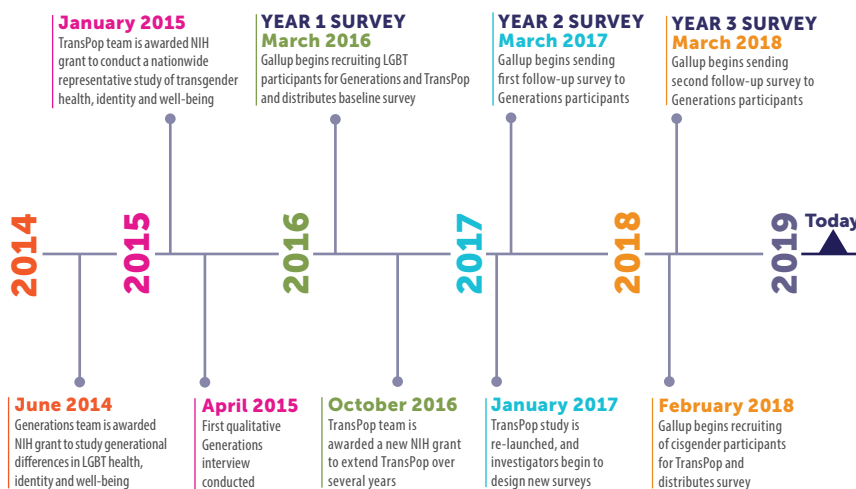


generations

A Study of the Life and Health of LGB People in a Changing Society

Where Is Generations?



Generations Updates

It is hard to believe that the Generations study is in its fifth year. Since the beginning, we have collected a great deal of valuable data, which would not have been possible without your participation. We are now in our fourth year of data collection and encourage you to send in your Follow-Up 3 surveys if you haven't done so already. If you haven't received the Follow-Up 3 survey yet, you will receive it one year after you completed the Follow-Up 2 survey. If you didn't complete the last survey, that's okay. You can still take part in this third survey even if you did not complete the second one.

Curious about how many others have participated in Generations at this point? **We now have 1,518 participants who have completed the surveys.**

Of course, your personal information is completely confidential, and any information that you have provided will not be connected to your identity.

Winter 2019 | 3:3



Hello Generations participants! We are excited to share updates since you last heard from us in the fall. Since the study began in 2014, we have completed two annual surveys and are in the midst of Year 3 follow-up. We are very grateful for the time and energy you have given to the Generations study. Your participation in this research provides valid and reliable data that are necessary to shed light on what is and what is not working for LGBT people. Please take the time to complete the survey when you receive it. As always, if you have a problem accessing the survey, or if you have not received it, please let us know at generations@ucla.edu.

May 2019 bring you peace and joy!

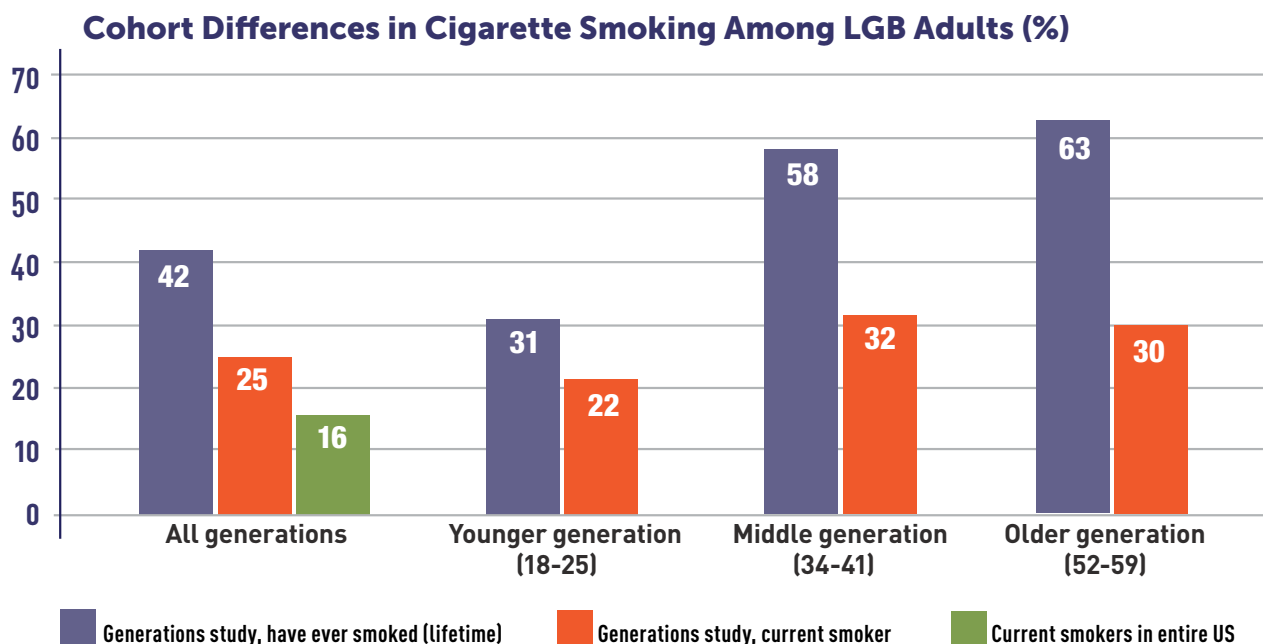
Ilan H. Meyer, Ph.D.
Study Principal Investigator
Distinguished Senior Scholar of Public Policy
The Williams Institute
UCLA School of Law

Generations Research Spotlight: Cigarette Smoking in 3 LGB Generations

We have data on cigarette smoking in a national sample of sexual minorities from three generations.

In this study, Generations investigator Dr. Allegra Gordon and colleagues found that LGB adults who had been exposed to more stressors, such as day-to-day discrimination and history of victimization, were more likely to be current smokers. Other findings included:

- Forty-two percent of Generations survey participants reported having smoked at least 100 cigarettes in their lifetime and 25% reported being current smokers. These data show that there are more current smokers who are LGB than the 16% reported for the general U.S. population.



Sergey Kozienko / Shutterstock.com

Update on TransPop Study



Data collection for Generations' sister study, TransPop (www.transpop.org), concluded at the end of 2018. In April 2018, a cisgender survey was added to the TransPop study to allow for comparisons between transgender and cisgender adults. By the end of data collection, 267 surveys had been completed by transgender participants and 1,129 by cisgender participants.

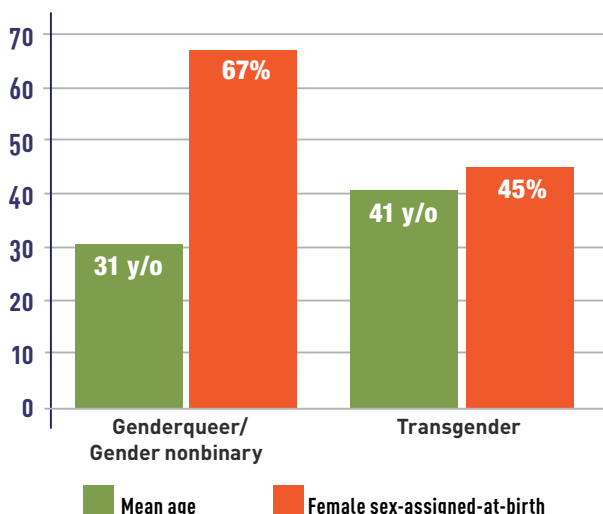
TransPop Research Spotlight: Comparing Genderqueer/nonbinary and Transgender-identified people

We have data on characteristics of Genderqueer/nonbinary people compared with transgender-identified people.

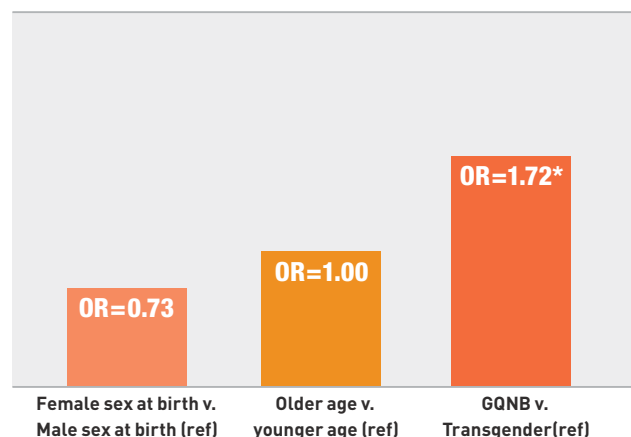
In this study, TransPop investigator Dr. Walter Bockting and colleagues investigated characteristics of genderqueer/gender nonbinary (GQNB) and transgender-identified individuals, as well as the influence of stress on their health and well-being. The investigators used a part of the sample including 138 respondents who identified as GQNB and 200 who identified as transgender. Some noteworthy findings included:

- GQNB participants were more likely than their transgender-identified counterparts to be female assigned at birth and to be younger.
- GQNB participants were almost two times more likely than transgender-identified participants to rate their general health as poor or fair as opposed to good or excellent; there were few differences in sex assigned at birth and age between these groups.

Mean Age and % of Female Sex Assigned at Birth



Odds of Reporting Poor or Fair General Health by Sex at Birth, Age and Gender Identity



The Generations Study Team

The Generations team gathered for their 5th annual investigator meeting in Los Angeles, December 13-14, 2018. Over the course of two days, the team collaborated on papers for publication, brainstormed new paper ideas, workshopped data analysis techniques, gave feedback on each other's work and thought about ways to carry the Generations study forward by collecting and sharing data.



*From left to right,
front row:
Jessica Fish,
Margaret Rosario,
Esther Rothblum,
Marguerita Lightfoot,
Logan Barsigian,
Soonie Choi,
Krystal Kittle.
Second row:
Ilan Meyer,
Phillip Hammack,
Stephen Russell,
Evan Krueger,
Allegra Gordon,
Bianca Wilson,
Andy Lin,
Meg Bishop,
David Frost,
Gary Harper.*

Contact Us

www.generations-study.com

P (310) 267-4382 **E** generations@ucla.edu

The Williams Institute | UCLA School of Law | Box 951476 Los Angeles, CA 90095-1476



UCLA



UNIVERSITY OF CALIFORNIA
SANTA CRUZ

UCSF



THE UNIVERSITY OF
TEXAS
— AT AUSTIN —



COLUMBIA UNIVERSITY
IN THE CITY OF NEW YORK

